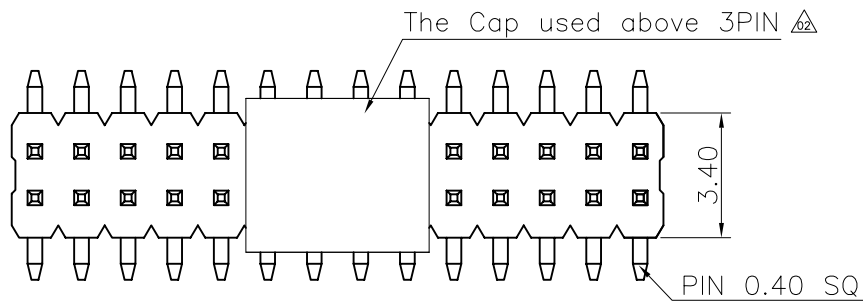


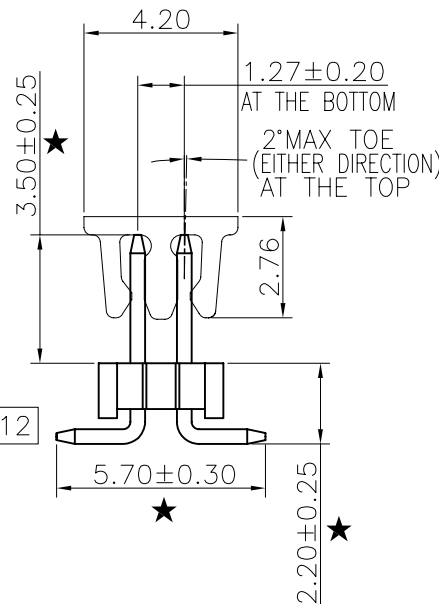
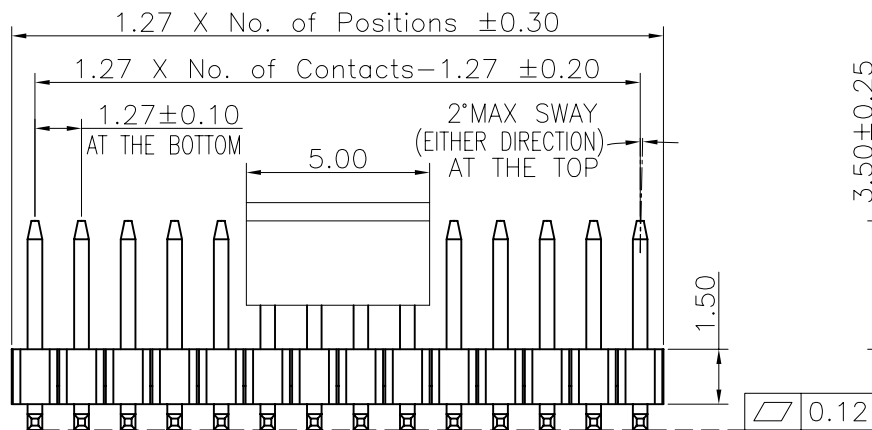
1 2 3 4 5 6 7 8 9

REV.	LOCAS.	DESCRIPTION	DATE	DRAWN
01	NEW	BATCH PRODUCTION INITIAL RELEASE.	2010.06.17	馮代勇
02	△2	增加3PIN可用CAP	2010.10.08	馮代勇
03	△3	變更圖號修改注解并新增包裝選項	2011.03.30	黃明霞
04	△4	依業務要求，增加車載產品信息	2016.06.20	胡金花

F



E



Specifications

Current Rating: 1.0Amp
 Insulation Resistance: 1000MΩMin.
 Dielectric Withstanding Voltage: 300VAC
 Contact Resistance: 20mΩMax.
 Operating Temperature: -40°C to +105°C

△4

Materials

Contact Material: Brass
 Insulator Material: High Temperature Thermoplastic, UL 94V-0 LCP or the equivalent material
 ☆ All materials must meet Greenconn hazardous substances control standards.

△4

"★": Critical Characteristics.

符號"★"表示(與安全或法規無關)客戶特殊要求,與產品組裝、功能等相關的產品或過程特殊特性。

"☆": Safety Features

符號"☆"表示(與安全或法規有關)那些與政府法規符合性或車輛/產品功能安全性相關的產品或過程特殊特性。

D

C

Greenconn P/N	Customer	Remarks
GPEC209-0502A053C1BF	G006	Automotive Connector

Ordering Information

G PEC209 - XX XX A 053 C 1 B X

No. of Pins per Row
02~50

Standard Plating
02=Gold Flash
Selective Plating
01=Tin
05=Gold Flash/Tin

Color
1=Black

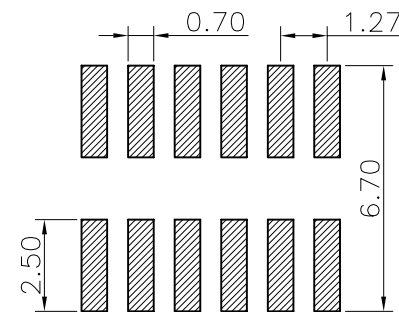
Standard Packing
C=Tube

Selective Packing
D=Tape Reel

E=Cap+Tube(used 04~40pin)

F=Cap+Tape&Reel(used 03~40pin)

Recommended P.C.Board
Layout
(Tolerance: ±0.05)



A

格稜股份有限公司
Greenconn Corporation

GENERAL TOLERANCE	
X.*±5.0°	X.±0.30
.X*±3.0°	.X±0.25
.XX*±2.0°	.XX±0.15
.XXX*±1.0°	.XXX±0.10

DESIGNED: 胡金花	DATE: 2016.06.20
CHECKED: 曹熙	DATE: 2016.06.20
CO SIGNED: 楊明胜	DATE: 2016.06.20
APPROVED: 李輝	DATE: 2016.06.20

DWG. NO.	GPEC209-CA53CB
PART NO.	GPEC209-XXXX A053C1BX

TITLE:	1.27 PIN HEADER DUAL ROWS SMT TYPE W/POST
--------	---

REV.	UNIT.	SCALE.	PAGE.
04	mm	5:1	1/1

1 2 3 4 5 6 7 8 9