

GlobTek, Inc. www.globtek.com 186 Veterans Drive, Northvale, NJ 07647 Tel. (201) 784-1000 Fax (201) 784-0111	Drawing Title: USB 3.1 TYPE-C connector female base 24P on-board patch	
	Model No. <a href="#">Connector</a>	
	Part No./Ordering No. <a href="#">JACK-USBC-241SMT-4BV64</a>	Rev A2

In Addition to GlobTek Inc.'s renewed ISO9001:2008 - Quality Management System Certification, GlobTek Inc. is now certified to:

ISO13485:2003 - Medical Devices Quality Management System Certification

ISO14001:2004 - Environmental Management System Certification

ISO Certificates are available online at <http://www.globtek.com/iso-certificates/>

The acceptance of this specification and use of the product described in this document indicates the acceptance and binding of the customer to Globtek TERMS AND CONDITIONS (attached to the end of this document), which supersede all other agreements, terms, and conditions ( <http://www.globtek.com/terms-and-conditions/>).

Prop 65 Statement:<https://www.globtek.com/prop-65-statement.pdf>

Footnote:

GlobTek Inc. will not be liable for the safety and performance of these power supplies if unauthorized access and repair occurs. End user should consult applicable UL, CSA or EN standards for proper installation instruction.

Limitation of Use:

GlobTek products are intended for use with commercial, medical, and/or industrial equipment only. GlobTek product are not authorized for use as mission critical components in life support hazardous environment, nuclear or aircraft applications without prior written approval from the CEO of GlobTek Inc.

Contents of this document are subject to change without prior notice.

### Customer Approval of Specification:

Please approve, sign and send back to GlobTek so we can complete order processing.

A delay in receipt of this form will delay delivery schedule.

Company Name:

Customer P/N:

Quote Number:

Date:

Authorized Representative Name:

Authorized Representative Signature:

GlobTek, Inc. www.globtek.com 186 Veterans Drive, Northvale, NJ 07647 Tel. (201) 784-1000 Fax (201) 784-0111	Drawing Title: USB 3.1 TYPE-C connector female base 24P on-board patch		
	Model No. <a href="#">Connector</a>	Rev A2	
Part No./Ordering No. <a href="#">JACK-USBC-241SMT-4BV64</a>			

REVISION HISTORY

REV	DESCRIPTION	SUB	DATE	APPROVED
A2	Update the box quantity information	QA	06/20/2024	QA
A1	Update Product description in the Drawing title	QA	06/06/2024	QA
A	Initial release	QA	08/03/2022	QA

3D CAD FILE:

[https://www.globtek.com/file/dl/jack-usbc-241smt-4bv64\\_asm.stp](https://www.globtek.com/file/dl/jack-usbc-241smt-4bv64_asm.stp)

AGENCY ONLINE DOCUMENTS

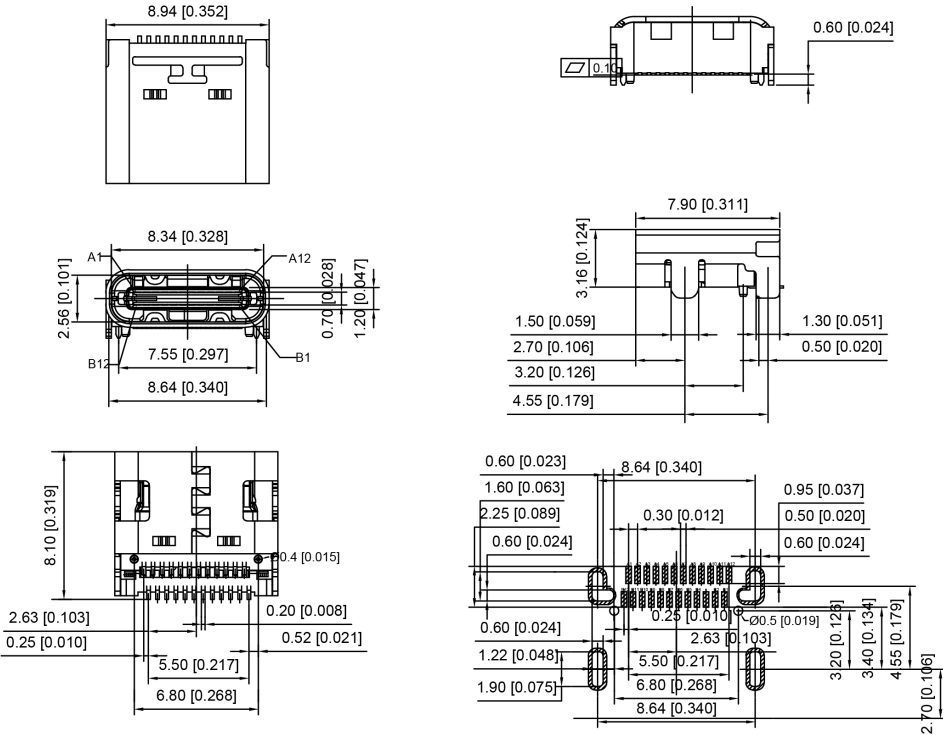
RoHS/RoHS3 Declaration [https://www.globtek.com/pdf/rohs\\_cert/01t3a000005hbTGAAY](https://www.globtek.com/pdf/rohs_cert/01t3a000005hbTGAAY)

REACH Declaration <https://www.globtek.com/r2/eM2co8>

Conflict Minerals Declaration <https://www.globtek.com/r2/SNw6P3>

Prop 65 Statement <https://www.globtek.com/r2/VMPRnr>

IPXY rating is based on 3rd party testing and customers should check suitability and test system level IPXY rating before ordering.



A1	GND	B12	GND
A2	SSTXP1	B11	SSRXP1
A3	SSTXN1	B10	SSRXN1
A4	VBUS	B9	VBUS
A5	CC1	B8	SBU2
A6	DP1	B7	DN2
A7	DN1	B6	DP2
A8	SBU1	B5	CC2
A9	VBUS	B4	VBUS
A10	SSRXN2	B3	SSTXN2
A11	SSRXP2	B2	SSTXP2
A12	GND	B1	GND
PIN	SIGNAL NAME	PIN	SIGNAL NAME

JACK-USBC-241SMT-4BV64

1:AU 1U"

GlobTek, Inc. www.globtek.com 186 Veterans Drive, Northvale, NJ 07647 Tel. (201) 784-1000 Fax (201) 784-0111	Drawing Title: USB 3.1 TYPE-C connector female base 24P on-board patch	
	Model No. <a href="#">Connector</a>	
	Part No./Ordering No. <a href="#">JACK-USBC-241SMT-4BV64</a>	Rev A2

Material

Housing Material: High temperature thermoplastic

Contact Terminal: High Grade Copper Alloy

Metallic Shell: Stainless Steel

Inner Ground Cover Shell: Stainless Steel

Mid Plate: Stainless Steel

Plating

Data Contact

Underplating: 50µ" Min. Nickel

Contact Plating: 1µ" Gold

Solder Area: 80µ" Matte Tin

Shell

Metallic Shell: 50µ" Min. Nickel

Cover Shell

Metallic Shell: 80µ" Min. Nickel

Inner Ground Cover Shell

Metallic Shell: 50µ" Min. Nickel

Electrical

Voltage Rating: 20V DC

Current Rating: Vbus pins collectively 5.00A, GND pins collectively 6.25A,  
B5 pin 1.25A, Other pins 0.25A per pin.

Contact Resistance: 40mΩ Max.

Insulation resistance: 100 MΩ MIN.

Dielectric withstanding voltage: 100V AC/Minute

Mechanical

Durability: 10,000 cycles

Mating Force: 5 to 20N

Unmating Force: 8 to 20N (post test)

Temperature Life, Vibration, Cyclic Temperature and Humidity, Thermal Shock, Mixed Flowing Gas and etc.:

<https://www.globtek.com/pdf/ENVIRONMENTAL.pdf>

GlobTek, Inc.  
www.globtek.com  
186 Veterans Drive,  
Northvale, NJ 07647  
Tel. (201) 784-1000  
Fax (201) 784-0111

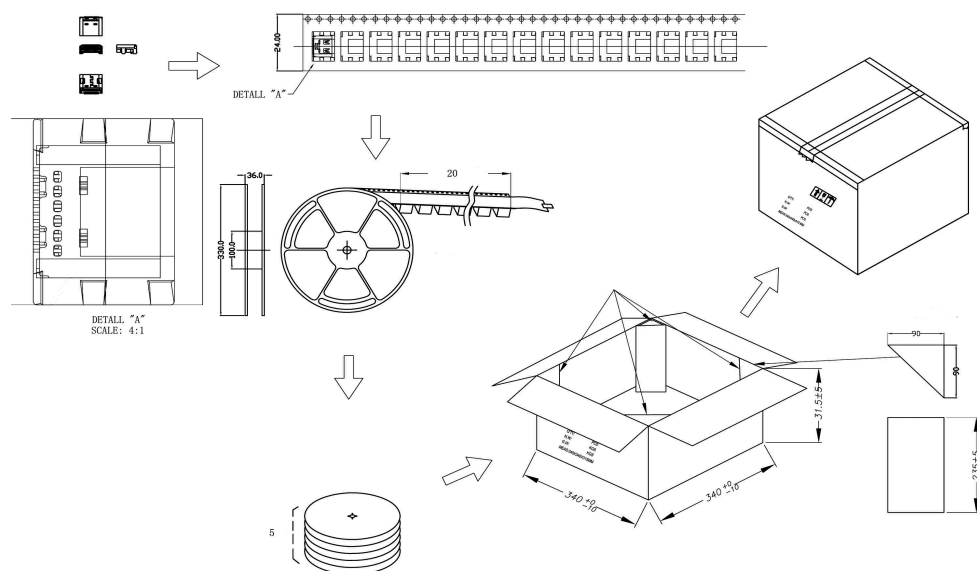
Drawing Title: USB 3.1 TYPE-C connector female base 24P on-board patch

Model No.	Connector
1	1
2	2
3	3
4	4
5	5
6	6
7	7
8	8
9	9
10	10
11	11
12	12
13	13
14	14
15	15
16	16
17	17
18	18
19	19
20	20
21	21
22	22
23	23
24	24
25	25
26	26
27	27
28	28
29	29
30	30
31	31
32	32
33	33
34	34
35	35
36	36
37	37
38	38
39	39
40	40
41	41
42	42
43	43
44	44
45	45
46	46
47	47
48	48
49	49
50	50
51	51
52	52
53	53
54	54
55	55
56	56
57	57
58	58
59	59
60	60
61	61
62	62
63	63
64	64
65	65
66	66
67	67
68	68
69	69
70	70
71	71
72	72
73	73
74	74
75	75
76	76
77	77
78	78
79	79
80	80
81	81
82	82
83	83
84	84
85	85
86	86
87	87
88	88
89	89
90	90
91	91
92	92
93	93
94	94
95	95
96	96
97	97
98	98
99	99
100	100

Part No./Ordering No. [JACK-USBC-241SMT-4BV64](#)

Rev A2

Packing:



NOTES:

1. 1000PCS。
2.  $5 \times 1000 = 5000 \text{PCS}$ 。

GlobTek, Inc. www.globtek.com 186 Veterans Drive, Northvale, NJ 07647 Tel. (201) 784-1000 Fax (201) 784-0111	Drawing Title: USB 3.1 TYPE-C connector female base 24P on-board patch	
	Model No. <a href="#">Connector</a>	
	Part No./Ordering No. <a href="#">JACK-USBC-241SMT-4BV64</a>	Rev A2

PACKAGING

Packing Spec P/N:	
Box Qty:	1000
Gift Box Size (mm):	
Gift Box Color:	White
Master Carton Size (mm):	340 x 340 x 240
Master Carton Cubic Volume (m³): 0.03	
Master GW (Kg):	8.0 kg
wt Ea. (Kg):	0.01 kg
wt Ea. (Kg):	0.02 kg
LABEL SPECS: ,	
PACK SPEC:	