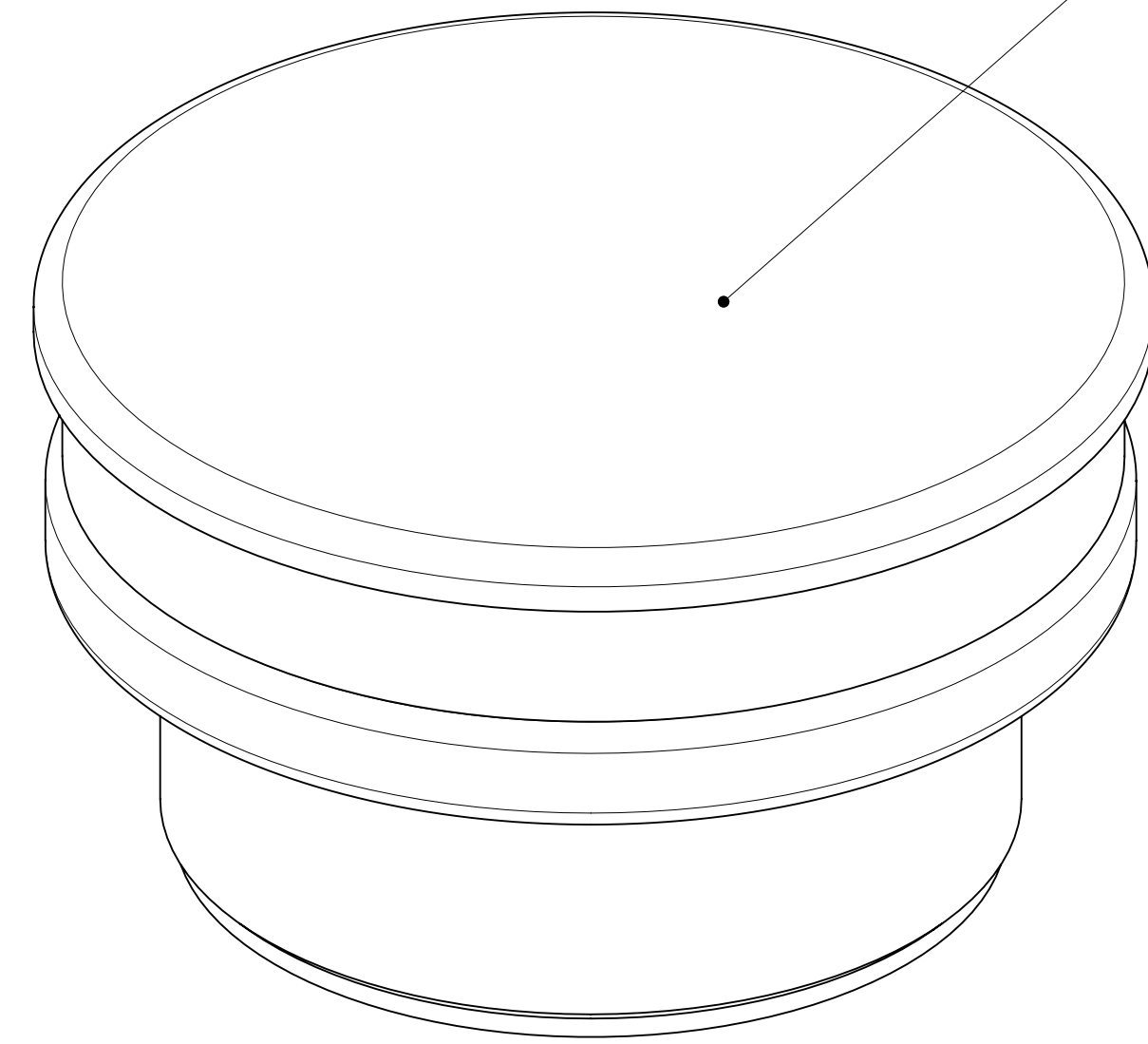
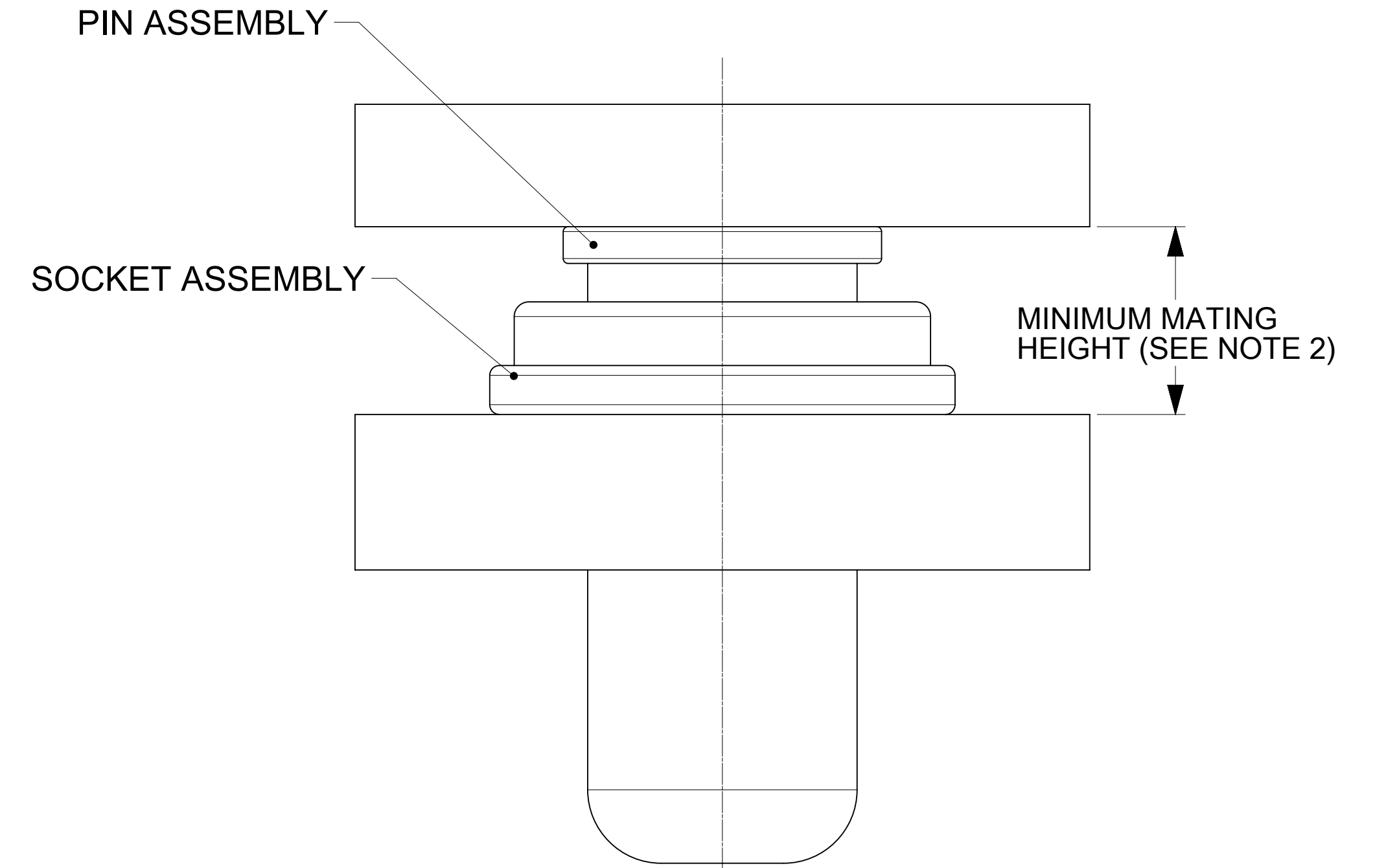
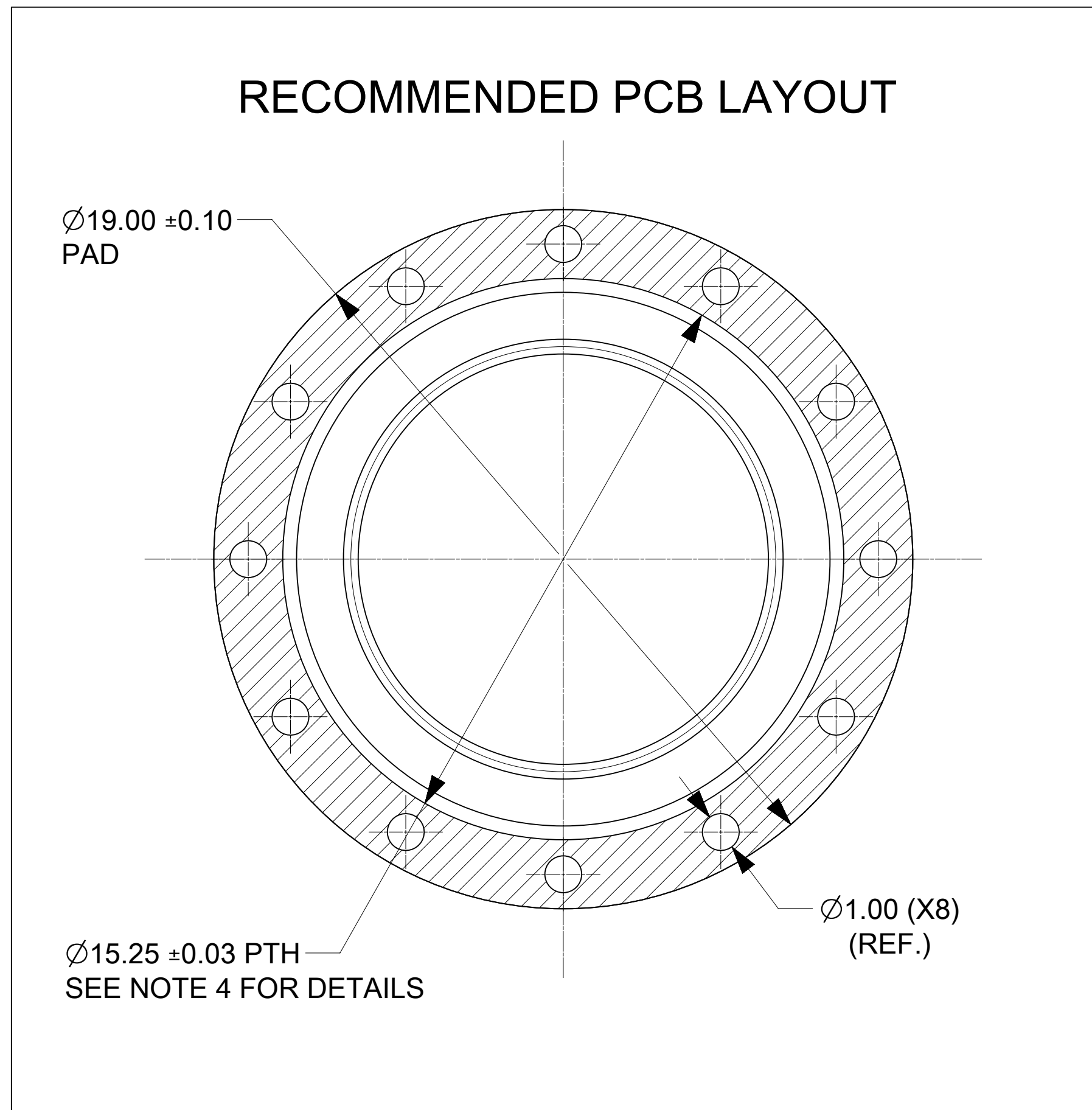


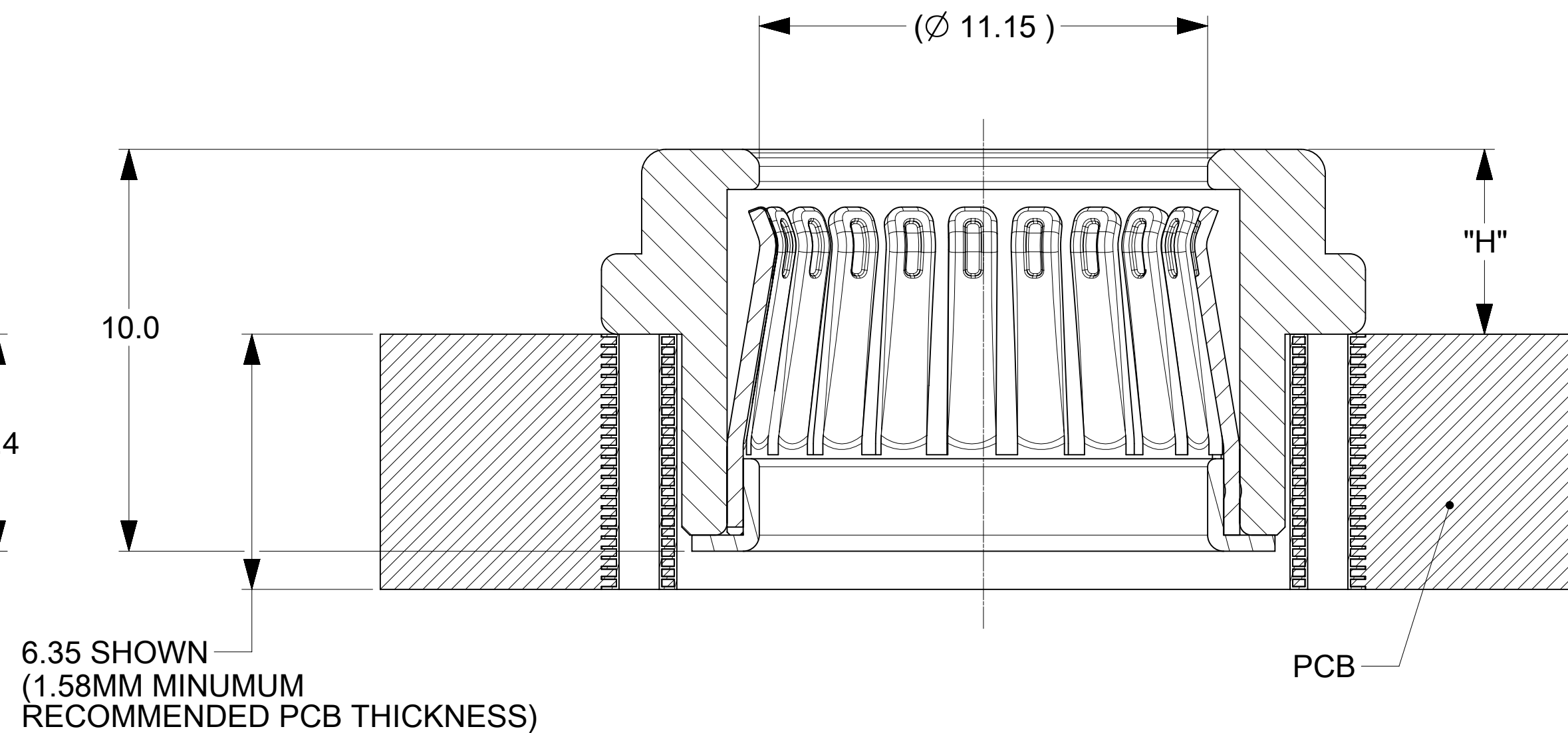
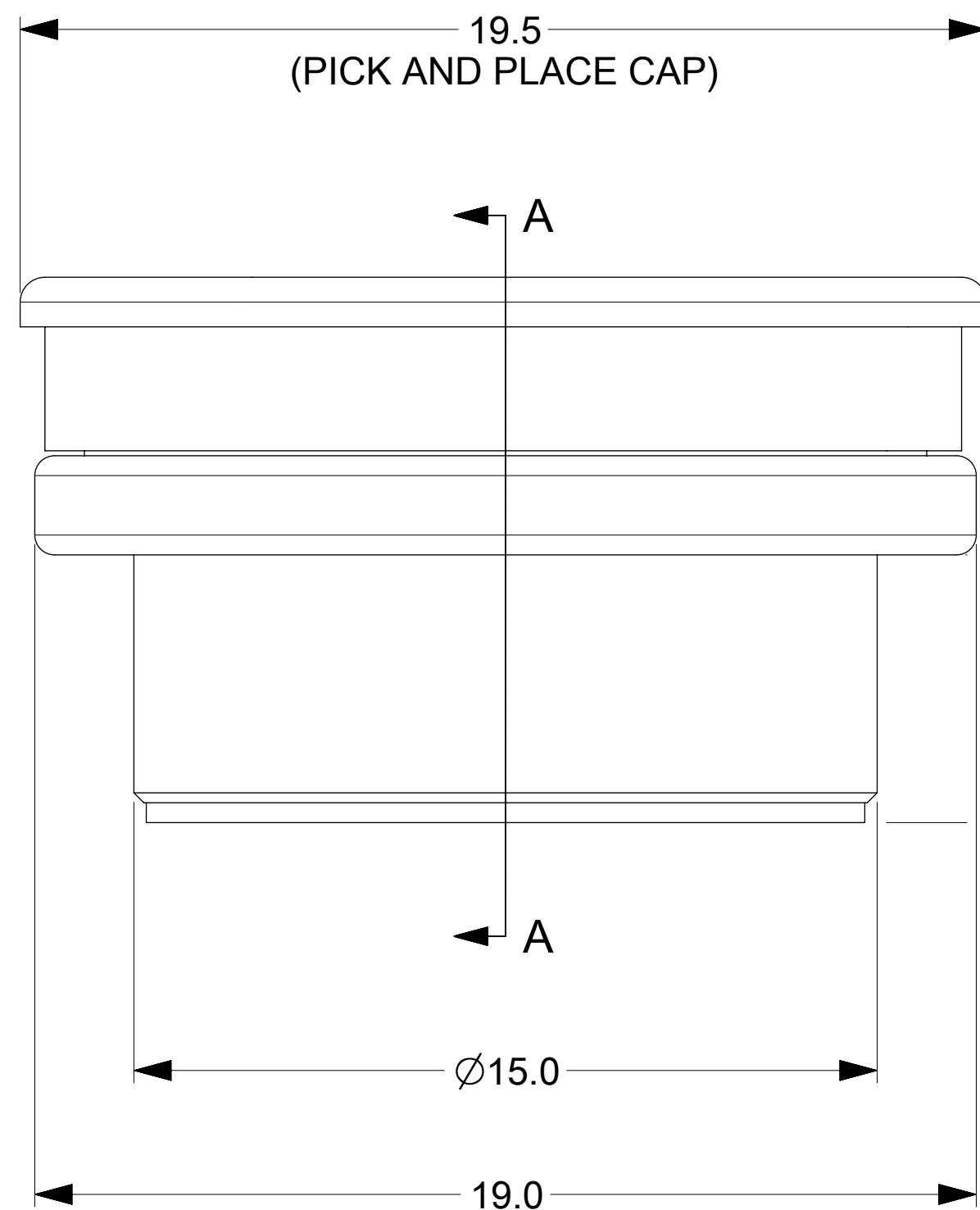
| PART NUMBER | DIM "H"     | NOTE |
|-------------|-------------|------|
| 213957-0001 | 4.60 ± 0.15 |      |
|             |             |      |



REMOVABLE PICK AND PLACE CAP SHOWN



MATING PROFILE



SECTION A-A  
(PICK AND PLACE CAP NOT SHOWN)

NOTES:

- MATERIALS:  
RETENTION CAP: STAINLESS STEEL  
PICK AND PLACE CAP: LCP UL94, V-0 COLOR BLACK  
BASE METAL: HIGH CONDUCTIVE COPPER ALLOY  
PLATING ON CONTACTS: 0.75 MICRON MIN GOLD OVER 1.27 MICRON MIN NICKEL  
PLATING ON BODY: 3.18 MICRON MIN SILVER OVER 1.27 MICRON MIN NICKEL
- MATES WITH MOLEX 11MM MALE PIN:
  - 11.0MM SMT MALE PIN DRAWING 213901-0000-SD, MIN. MATING DISTANCE 7.32MM
  - 11.0MM PRESS FIT MALE PIN DRAWING 213900-0000-SD, MIN. MATING DISTANCE 7.67MM
  - 11.0MM SCREW MOUNT MALE PIN DRAWING 213902-0000-SD MIN. MATING DISTANCE 10.67MM
- PRODUCT SPECIFICATION: 2138800001-PS
- APPLICATION SPECIFICATION: 2138800001-AS  
SEE APPLICATION SPEC FOR SOLDERING INFORMATION.
- PACKAGING SPECIFICATION: 2139570001-PK(TRAY)
- SILVER COMPONENTS WILL BE SUPPLIED TARNISH FREE BUT MAY TARNISH OVER TIME.
- PICK AND PLACE CAP TO BE REMOVED AFTER SOLDERING. CAP TO BE PULLED OUT FROM THE TOP.

|   |  |                        |  |   |  |        |  |   |  |  |  |
|---|--|------------------------|--|---|--|--------|--|---|--|--|--|
| THIS DRAWING CONTAINS INFORMATION THAT IS PROPRIETARY TO MOLEX ELECTRONIC TECHNOLOGIES, LLC AND SHOULD NOT BE USED WITHOUT WRITTEN PERMISSION |  |                        |  |   |  |        |  |   |  |  |  |
| DIMENSION UNITS   |  | SCALE                  |  | CURRENT REV DESC: UPDATED THE TOLERANCE VALUE AND THE TITLE BLOCK |  |        |  |   |  |  |  |
| mm  |  | NTS                    |  |   |  |        |  |   |  |  |  |
| GENERAL TOLERANCES (UNLESS SPECIFIED)   |  |                        |  | EC NO: 747243   |  |        |  | 11.0MM SENTRALITY TOP ENTRY SMT STANDARD SOCKET IN TRAY<br>PRODUCT CUSTOMER DRAWING |  |  |  |
| ANGULAR TOL ± 0.5°  |  |                        |  | DRWN: SOURAJ 2023/02/20   |  |        |  |   |  |  |  |
| 4 PLACES ±  |  |                        |  | CHK'D: SCS02 2023/04/25   |  |        |  | DOCUMENT NUMBER: 2139570000-SD<br>DOC TYPE: PSD<br>DOC PART: 000<br>REVISION: A2    |  |  |  |
| 3 PLACES ±  |  |                        |  | APPR: HTHYAGARAJ 2023/04/26                                       |  |        |  |   |  |  |  |
| 2 PLACES ± 0.15   |  |                        |  | INITIAL REVISION:   |  |        |  | MATERIAL NUMBER: SEE CHART<br>CUSTOMER: GENERAL MARKET<br>SHEET NUMBER: 1 OF 1      |  |  |  |
| 1 PLACE ± 0.25  |  |                        |  | DRWN: TOMLU 2020/02/11  |  |        |  |   |  |  |  |
| 0 PLACES ±  |  |                        |  | APPR: BPISZCZOR 2020/10/16  |  |        |  |   |  |  |  |
| DRAFT WHERE APPLICABLE MUST REMAIN WITHIN DIMENSIONS  |  | THIRD ANGLE PROJECTION |  | DRAWING   |  | SERIES |  |   |  |  |  |
|   |  |                        |  | D-SIZE  |  | 213957 |  |   |  |  |  |