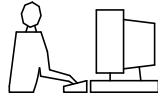
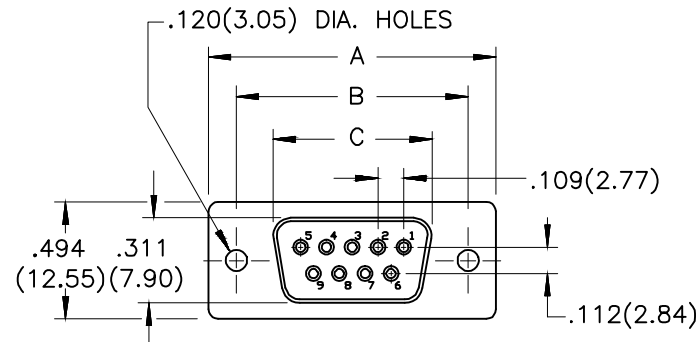


THIS IS A C.A.D. GENERATED DRAWING  
DO NOT MAKE MANUAL REVISIONS TO MASTER.



\* UNLESS OTHERWISE SPECIFIED TOLERANCES  
ON DECIMAL IS:



**1. MATERIALS:**

1.1 INSULATOR: PBT+30%G/F,UL 94V-0

COLOR: WHITE

1.2 SHELL: SPCC, NICKEL PLATED

FRONT:NICKEL PLATING, BACK:NICKEL PLATING

**2. ELECTRICAL:**

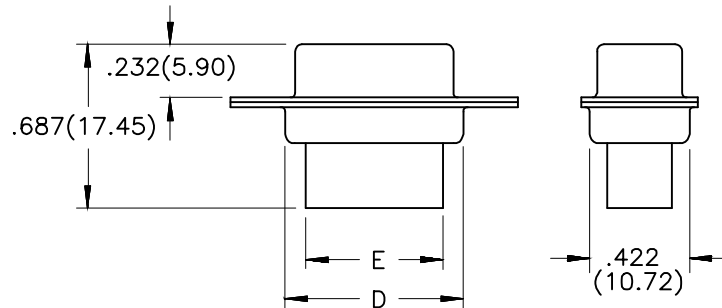
2.1 VOLTAGE RATING:250V

2.2 CURRENT RATING:3 AMPERES

2.3 DIELECTRIC WITHSTANDING VOLTAGE:500VAC MIN

2.4 INSULATION RESISTANCE: 1000 MEGOHMS MIN

2.5 WORKING TEMPERATURE: -55°C TO +105°C



ORDER INFORMATION	PART NUMBER	SIZE	DIMENSION(MM)				
			A±.010(0.25)	B±.010(0.25)	C±.010(0.25)	D±.010(0.25)	E±.010(0.25)
	MHDBC9SS-NW	09	1.213(30.81)	.984(24.99)	.643(16.33)	.759(19.28)	.610(15.50)
	MHDBC15SS-NW	15	1.545(39.25)	1.312(33.32)	.971(24.66)	1.085(27.55)	.945(24.00)
	MHDBC25SS-NW	25	2.088(53.05)	1.852(47.04)	1.511(38.38)	1.624(41.25)	1.496(38.00)
	MHDBC37SS-NW	37	2.732(69.40)	2.500(63.50)	2.159(54.85)	2.260(57.40)	2.134(54.20)



THIS SERIES FULLY CONFORMS TO THE  
EUROPEAN UNION DIRECTIVES 2002/95/EC  
AND 2002/96/EC FOR RoHS COMPLIANCY.



**MH CONNECTORS ,  
DIVISION OF EDAC**

THESE DRAWINGS AND SPECIFICATIONS ARE THE  
PROPERTY OF MH CONNECTORS AND SHALL NOT BE  
REPRODUCED, COPIED OR USED AS THE BASIS FOR  
THE MANUFACTURE OR SALE OF APPARATUS WITHOUT  
WRITTEN PERMISSION.

DRAWN  
Iven Ou  
DATE  
09-15-22

APPROVED  
DATE

SCALE  
1 : 1  
SHEET OF  
1 OF 1  
REV:  
2.0

DRAWING No  
MHDBCXXSS-NW