

3

2

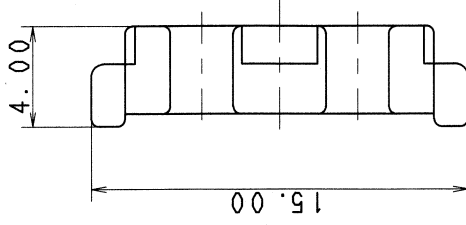
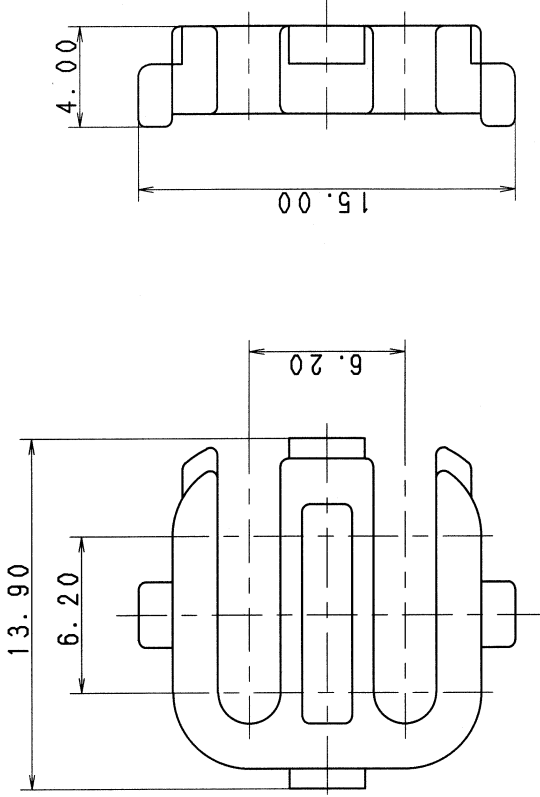
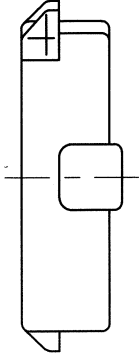
1

△注記

1. 取付可能品番: 7222-7444-40 ETC.,  
7123-7444 ETC.

△NOTE

1. INSTALLATION PART NO.: 7222-7444-40 ETC.,  
7123-7444 ETC.



B

A

B

A

△ 05/10/19	ADDED GENERAL TOLERANCE, ETC.	C05-ZE05	T. K	CUSTOMER	CUSTOMER PART NO.	CUSTOMER DWG NO.	MATL. SPEC.	PBT (BROWN)	TREAT. & FIN.
87/04/11	NEW	7MC-0179	S. K	OFFICE			NAME	SWP-TYPE CONNECTOR	
LET	DATE	REVISION RECORD	NO.	VENDOR		TRIAL PART NO.		REAR HOLDER 4P	
△GENERAL TOLERANCE				DWG TYPE	DWG SOURCE	DWG DATE	UNIT	SCL	ANGLE
10MAX	50MAX	100MAX	2500VR	R	NEW	87/04/11	mm	5:1	3
A ±0.15	±0.2	±0.3	±0.5	APPROVED	CHECKED	CHECKED	DESIGN	DRAWN	O. DAR
B ±0.2	±0.3	±0.55	±0.95	上/心	鈴木(悦)	小村	YAMADA		0. DAR
C ±0.3	±0.5	±0.8	±1.4	05/10/20	05/10/20	05/10/20	86/09/17	05/10/19	
SPECIFIED	MASS	g		9					
				PART NO.		7157-7815-80		CH. CODE	
				DWG NO.		7157-7815-80:R		SET DWG NO.	
				YAZAKI CORPORATION					

3

2

1

B

A

B

A