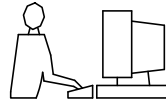


THIS IS A C.A.D. GENERATED DRAWING
DO NOT MAKE MANUAL REVISIONS TO MASTER.



* UNLESS OTHERWISE SPECIFIED TOLERANCES
ON DECIMAL IS: ANGLE $\pm 1^\circ$

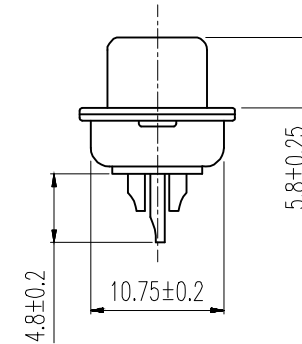
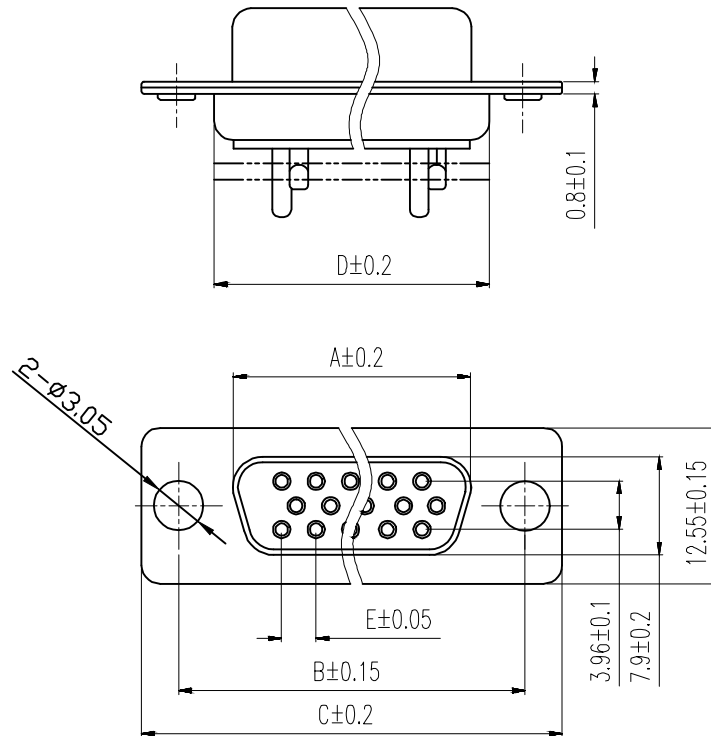
.X ± 0.20
.XX ± 0.15
.XXX ± 0.05

ISSUE NUMBER

ORIGINAL ①

UPDATING DRAWING ②
Iven Ou 2022/08/18

UPDATING FRAME ③
Iven Ou 2023/03/08



Order Codes:

Socket Connector

Stamped & Formed

15-WAY	2101-0300-11	MHHDS15-F-N-B-S
26-WAY	2101-0300-12	MHHDS26-F-N-B-S
44-WAY	2101-0300-13	MHHDS44-F-N-B-S
62-WAY	2101-0300-14	MHHDS62-F-N-B-S

POS.	A	B	C	D	E
15	16.33	24.99	30.80	19.28	2.29
26	24.85	33.32	39.10	27.75	2.29
44	38.38	47.04	53.00	41.30	2.29
62	54.86	63.50	69.30	57.40	2.41

NOTES:

1.MATERIAL:

1.1 Plastic:PBT+30% G.F (UL94V-0) BLACK

1.2 Spcc shell:Spcc front shell is nickel plated
back shell is nickel plated

THESE DRAWINGS AND SPECIFICATIONS ARE THE
PROPERTY OF MH CONNECTORS AND SHALL NOT BE
REPRODUCED, COPIED OR USED AS THE BASIS FOR
THE MANUFACTURE OR SALE OF APPARATUS WITHOUT
WRITTEN PERMISSION.

DRAWN
IVEN Ou
DATE
2022/08/18

APPROVED
DATE

SCALE
1 : 1
SHEET OF
1 OF 1
REV:
3.0

DRAWING No
MHHDSXX-F-N-B-S



THIS SERIES FULLY CONFORMS TO THE
EUROPEAN UNION DIRECTIVES 2015/863/EU
AND 2011/65/EU FOR RoHS COMPLIANCY.



MH CONNECTORS ,
DIVISION OF EDAC