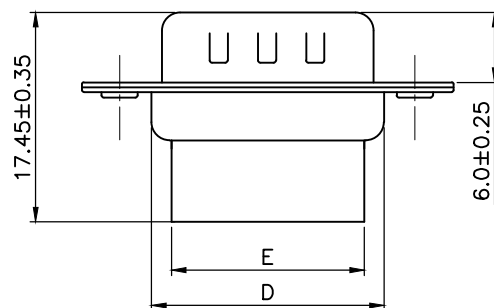
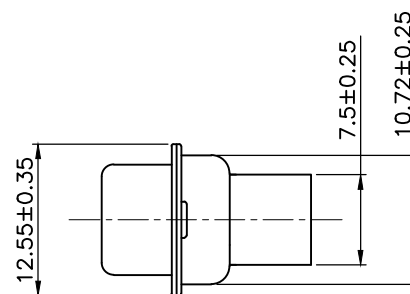
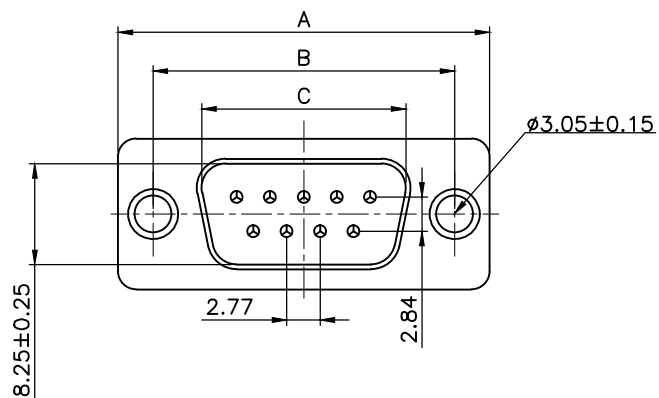


THIS IS A C.A.D. GENERATED DRAWING
DO NOT MAKE MANUAL REVISIONS TO MASTER.



* UNLESS OTHERWISE SPECIFIED TOLERANCES
ON DECIMAL IS: ANGLE $\pm 1^\circ$
.X ± 0.25
.XX ± 0.15



PIN	A ± 0.25	B ± 0.25	C ± 0.25	D ± 0.25	E ± 0.25
09	30.81	24.99	16.92	19.28	15.50
15	39.25	33.32	25.25	27.75	24.00
25	53.03	47.04	38.96	41.30	38.00
37	69.50	63.50	55.42	57.40	54.40

Order Codes:
Plug Connector

9-WAY	2101-0190-01	MHDBC9SP
15-WAY	2101-0190-02	MHDBC15SP
25-WAY	2101-0190-03	MHDBC25SP
37-WAY	2101-0190-04	MHDBC37SP

Remark:

1.SPECIFICATION:

Rated voltage:250V
Rates current:3AMP
Contact resistance:30M Ω MAX
Insulation resistance:1000M Ω MIN.at 500V DC
Withstand voltage:500V Per mintute
Temperature range:-55 -105°C

2.MATERIAL:

Plastic:PBT+30% G.F (UL94V-0) BLACK
Spcc shell:Spcc front shell is nickel plated back shell is nickel plated

THESE DRAWINGS AND SPECIFICATIONS ARE THE
PROPERTY OF MH CONNECTORS AND SHALL NOT BE
REPRODUCED, COPIED OR USED AS THE BASIS FOR
THE MANUFACTURE OR SALE OF APPARATUS WITHOUT
WRITTEN PERMISSION.

DRAWN Iven Ou		DATE 08-30-22	
APPROVED		DATE	
SCALE 1 : 1	SHEET 1	OF 1	REV: 4.0
DRAWING No MHDBCXXSP			



THIS SERIES FULLY CONFORMS TO THE
EUROPEAN UNION DIRECTIVES 2002/95/EC
AND 2002/96/EC FOR RoHS COMPLIANCY.



MH CONNECTORS ,
DIVISION OF EDAC