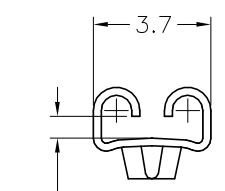
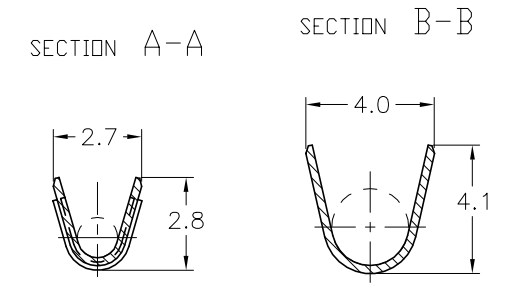
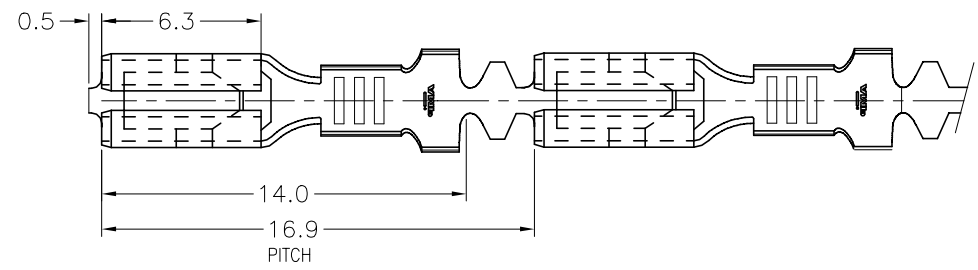
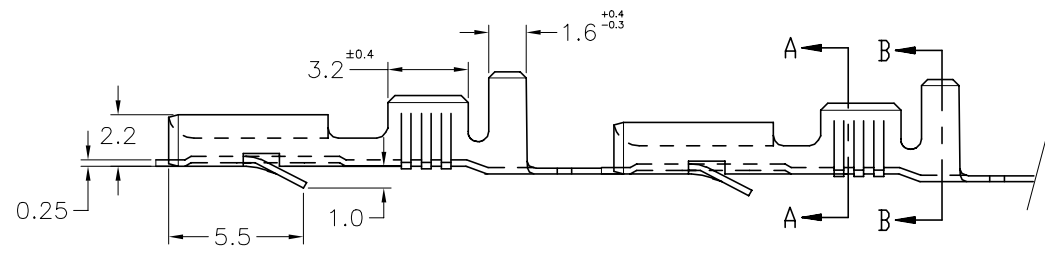


THIS DRAWING IS UNPUBLISHED.
 VERTRAULICHE UNVERÖFFENTLICHTE ZEICHNUNG
 RELEASED FOR PUBLICATION
 FREI FÜR VERÖFFENTLICHUNG
 OCT. 1999.
 ALL RIGHTS RESERVED.
 ALLE RECHTE VORBEHALTEN

LOC IR	DIST -	REVISIONS ÄNDERUNGEN			DATE	DWN	APVD
		P	LTR	DESCRIPTION BESCHREIBUNG			
		AH		REVISED PER ECR-21-100525	04MAR2021	PC	DH

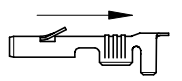


"x"
TO FIT 0.8 TAB THK.



0.68±0.08	0.74±0.08	PRE-TINNED	BRASS	1-160655-1	AF
		TIN PLATED	BRASS	160655-6	AF
		SILVER OVER NICKEL PLATED	BRASS	160655-5	AF
		PRE-TINNED	PH.BRONZE	160655-4	AF
		UNPLATED	PH.BRONZE	160655-3	AF
		PRE-TINNED	BRASS	160655-2	AF
		UNPLATED	BRASS	160655-1	AF
"x"		FINISH/COLOR	MATERIAL	PART NUMBER	REV

SUPPLY CONDITION



DIRECTION OFF TOP OF REEL

THIS DRAWING IS A CONTROLLED DOCUMENT.
 DIESE ZEICHNUNG IST EIN KONTROLLIERTES DOKUMENT.

DIMENSIONS: MASSENEHITEN INCHES	TOLERANCES UNLESS OTHERWISE SPECIFIED: ALLGEMEINTOLERANZEN	DWN H.YAALI 12 OCT 99	TE Connectivity	
	0 PLC ± 0.3 1 PLC ± 0.3 2 PLC ± 0.3 3 PLC ± 0.3 4 PLC ± - ANGLES/WINKEL ± 2'	CHK C.TARTARI 12 OCT 99	FASTON-FASTON CONNECTOR .110 SRS REC. CONTACT	
MATERIAL SEE TABLE	FINISH/OBERFLAECHE/FARBE SEE TABLE	APVD -	SIZE A3	RESTRICTED TO NUR FÜR
WIRE RANGE 0.5-1.5 mm ²	INSUL. RANGE 2.0-3.0	PRODUCT SPEC PRODUKTSPEZ. -	CAGE CODE 00779	DRAWING NO. ZEICHNUNGS-NR. C=160655
		APPLICATION SPEC VERARBEITUNGSSPEZ. -	SCALE MASSTAB 5	SHEET BLATT 1 OF VON 1
		WEIGHT GEWICHT -	REV AH	
		CUSTOMER DRAWING/KUNDENZEICHNUNG		

Mouser Electronics

Authorized Distributor

Click to View Pricing, Inventory, Delivery & Lifecycle Information:

[TE Connectivity:](#)

[160655-2](#)