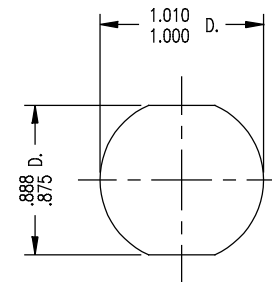
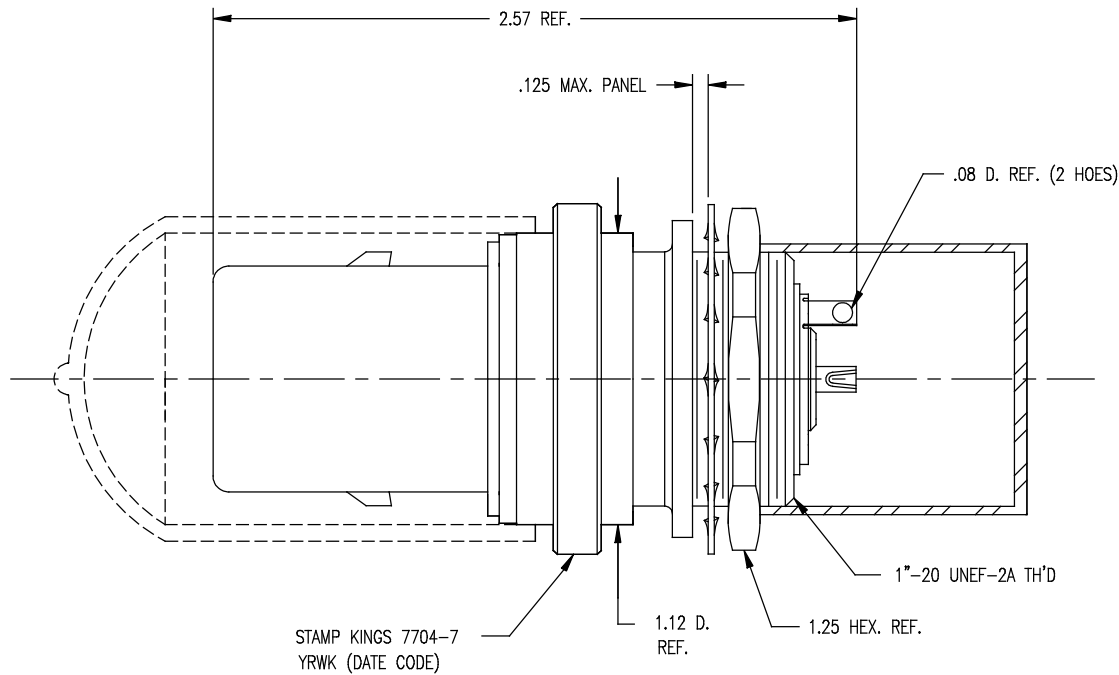


DASH NO.	M CODE	MADE FROM
----------	--------	-----------

GSD

7704-7



MOUNTING HOLE

GSD

REVISIONS

ISSUE	CHANGES
0	ER 36669 ME 11/01/95
1	CN 37209 A KH 06/10/97
2	CN 37786 D HVN 03/16/99
3	CN 38120 C BDH 11/07/00
4	CN 38137 C TML 01/05/01

7704-7S

SCALE 2:1	
APPROX SURFACE AREA	
USED ON	
REF: KP-8050-003-000	
RCPT, BKHD, TRI-LOC, SERIAL DIGITAL	
DRAWN ME	DATE 11/01/95
DESIGN FD	DATE 11/01/95
APPR.	DATE

KINGS
ELECTRONICS CO., INC.
ROCK HILL, SOUTH CAROLINA 29730

7704-7

NOTES:

1. MATERIALS:

CAPS: VINYL
INSULATORS: TEFLON, ASTM-D-4894
GASKETS: SILICONE RUBBER, ZZ-R-765
CONDUCTIVE GASKET: CONSIL C 87-10004, 60-70 DUROMETER
LOCKWASHER }
RETAINING RING } SPRING STEEL, PER ASTM A682
E-RING
OUTER CONTACT: PHOSPHOR BRONZE, ASTM-B-103
BODY: BR. COPPER, ASTM-B-196
ALL OTHER METAL PARTS: BRASS, ASTM-B16

2. FINISHES:

CENTER CONTACTS: GOLD PLATE PER MIL-G-45204
ALL OTHER METAL PARTS: KINGS TARNISH RESISTANT NICKEL FINISH (TR-5)

3. ELECTRICAL CHARACTERISTICS:

FREQUENCY RANGE: DC-500 MHZ
NOMINAL IMPEDANCE: 75 ~W
VOLTAGE BREAKDOWN: CENTER CONDUCTOR/INNER GROUND: 1500 VOLTS RMS
INNER GROUND/OUTER GROUND: 500 VOLTS RMS

Mouser Electronics

Authorized Distributor

Click to View Pricing, Inventory, Delivery & Lifecycle Information:

[Winchester Interconnect:](#)

[7704-7](#)