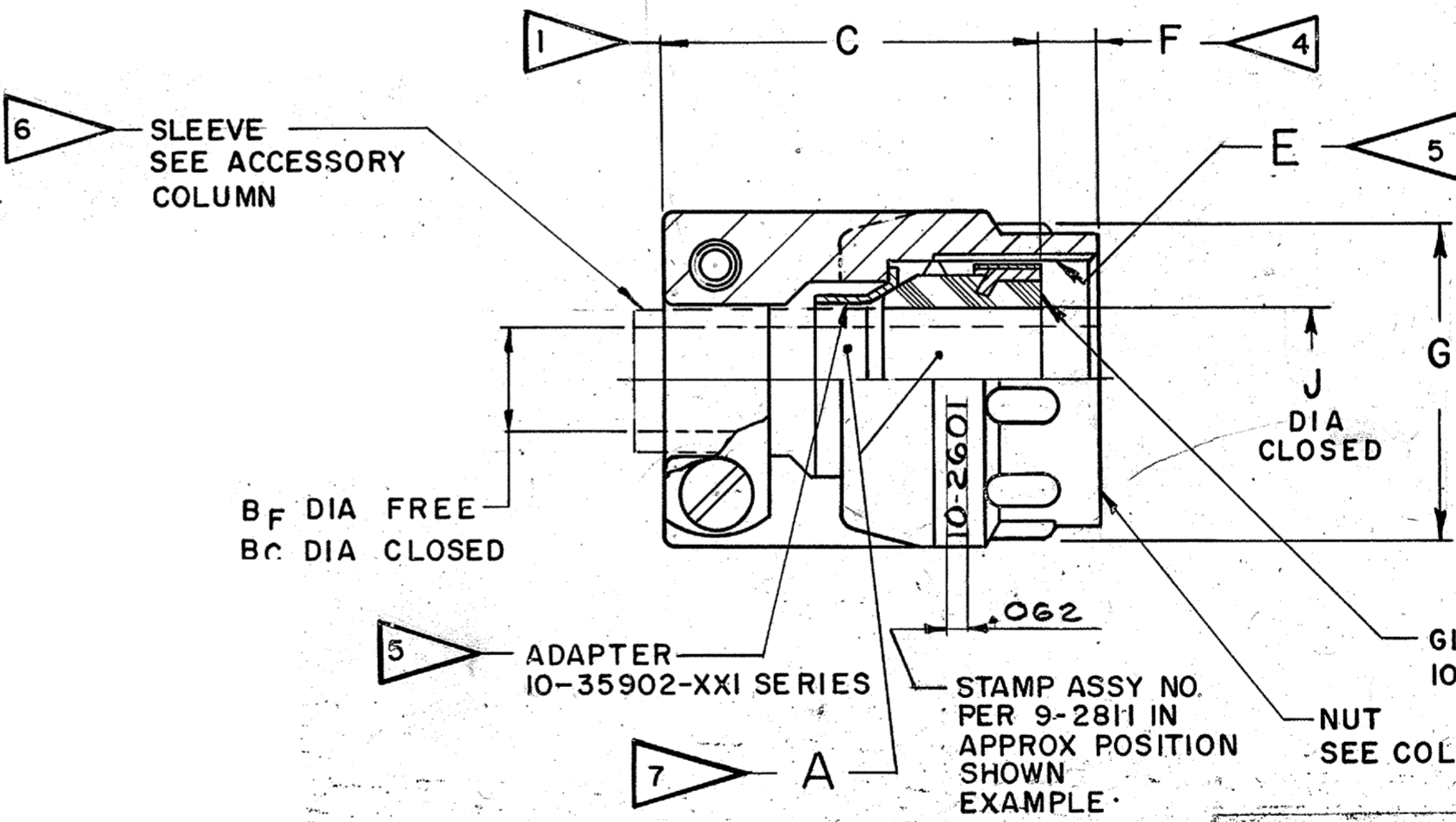
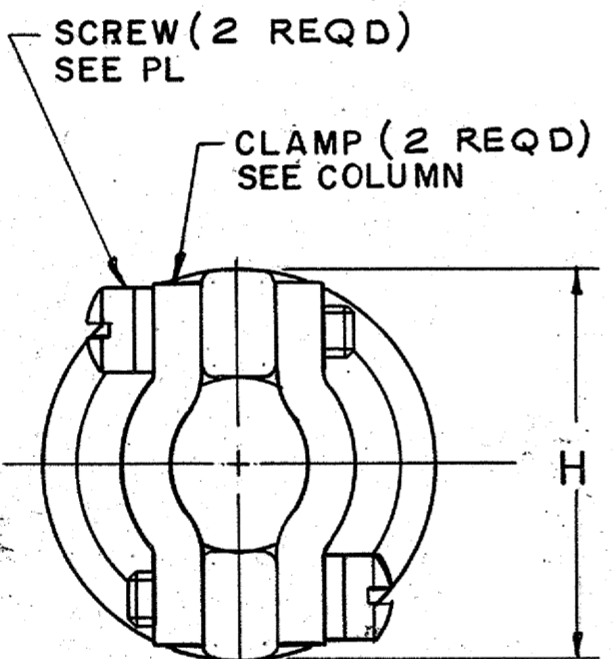


ASSEMBLY NUMBER	MS NO. REF	CLAMP	NUT	A DIA MAX CABLE	J DIA CLOSED	C MAX	E THREAD CLASS 2B	F MIN	G DIA ±.016	H MAX	RELEASE
10-260150-10	3057-3B	10-130511-8	10-350348-10	.209	.027	.938	.500 -28UNEF	.375	.719	.812	39508-68
-12	-4B	-10	-12	.302	.094		.625 -24UNEF		.844	.906	
-14	-6B	-12	-14	.428	.230		.750 -20UNEF		.969	1.031	
-16	-8B	-14	-16	.515	.316		.875 -20UNEF		1.094	1.125	
-18	-10B	-16	-18	.614	.378	1.016	1.000 -20UNEF		1.219	1.234	
-20	-12B	-18	-20	.738	.445	1.031	1.1875-18UNEF		1.406	1.484	
-24	-16B	-20	-24	.926	.611	1.141	1.4375-18UNEF		1.656	1.671	
-32	-20B	-28	-32	1.200	.922	1.328	1.750 -18UNS	.438	2.000	2.188	
-36	-24B	-30	-36	1.363	.922	1.531	2.000 -18UNS	.500	2.250	2.344	
-40	-28B	-34	-40	1.611	1.180	1.531	2.250 -16UN	.500	2.500	2.594	
-44	-32B	10-130511-39	-44	1.865	1.427	1.612	2.500 -16UN	.574	2.750	2.812	52524-621

REVISIONS		DATE	APPROVED
CHG NO.	SYM	DESCRIPTION	
		FOR CHGS A ₁ THRU A ₆ SEE RECORD DWG	
55618-1	A7	WAS 10-130511-38(1) (CLAMP COL) (-44)	3-6-74 Russell
55823-2	A8	WAS 1.551 (C COL) (-44)	6-7-74 Russell
72213-13	B	(CL II) REV CLAMP COL	5-28-81 LEWIS
A9226	C	(CL I) UPDATED COMPANY NAME/ADDRESS; REMOVED FROM NOTE 3 "GREY ANODIZE SUFFIX -XX4"	4-13-11 JONES

ACCESSORY (NOT PART OF STANDARD ASSY)			
SIZE	SLEEVE	B _F DIA ±.016	B _C DIA
10	10-35910-101	.125	.000
12			
14	-121	.219	.010
	-121	.219	.020
16	-161	.438	.222
	-141	.312	.085
18	-181	.438	.200
	-141	.312	.085
20	-201	.541	.270
	-161	.438	.177
24	-241	.750	.433
	-201	.541	.260
	-161	.438	.186
32	-321	.938	.620
	-241	.750	.442
	-201	.541	.273
36	-361	1.125	.682
	-301	.938	.504
	-241	.750	.358
40	-401	1.250	.816
	-321	.938	.514
	-241	.750	.368
44	-441	1.625	1.229
	-401	1.250	.897
	-321	.938	.638



7. DIA INDICATED IS THE MINIMUM FREE INSIDE DIA OF EITHER THE ADAPTER OR GLAND AND DETERMINES THE MAX ACCEPTABLE CABLE DIA.
6. IN CLAMP SIZES WHERE MORE THAN ONE ACCESSORY SLEEVE IS INDICATED, THE SMALLER SIZE SLEEVES TELESCOPE INTO LARGER SIZE SLEEVES TO OBTAIN THE MIN. CLOSED DIA INDICATED IN COLUMN B_C.
5. LUBRICATE THREADS & SURFACES OF INDICATED ADAPTER WITH A LIGHT FILM OF PETROLATUM 9-3239.
4. MINIMUM THREAD ENGAGEMENT REQUIRED TO OBTAIN MAXIMUM CLAMPING ACTION.
3. TO COMPLETE ASSEMBLY NUMBER, CLAMP & NUT NUMBERS, ADD APPLICABLE THIRD DIGIT SUFFIX NUMBER FOR DESIRED FINISH.
 BRIGHT CADMIUM PLATE ... SUFFIX -XX1
 BLACK ANODIZE ... SUFFIX -XX2
 CADMIUM PLATE OLIVE DRAB ... SUFFIX -XX3
2. FOR COMPONENT PART NUMBERS, QUANTITIES AND RELEASE STATUS OF THE DESIRED UNIT, SEE SEPARATE PARTS LIST.
1. DIMENSION INDICATES FINAL INSTALLATION. FOR STORAGE & SHIPPING, ASSEMBLE PARTS IN FREE POSITIONS AS SHOWN.

NOTES: REF SYMBOL

ITEM NO.	QTY REQD	DESCRIPTION	PART NUMBER	CODE IDENT	ZONE
PARTS LIST					
UNLESS OTHERWISE SPECIFIED		DRAWN: A. HISCOTT	DATE: 8-7-62	AMPHENOL CORPORATION 40-60 DELAWARE AVENUE SIDNEY, NEW YORK	
LINEAR DIMENSIONS ARE IN INCHES. TOLERANCES: 3 PLACES ±.010; 2 PLACES ±.03; 1 PLACE ±.1; ANGLES ± 2°. OTHER STANDARDS PER SCINTILLA SPEC 9-3800 AND MIL-STD 8.		CHECKED: <i>Mohney</i>	DATE: 8-29-62	TITLE: CLAMP, CABLE, ELECTRICAL CONNECTOR ASSEMBLY OF	
MATERIAL SPEC	PROCESS SPEC	STANDARDS: <i>9-29-62</i>	ENGINEERING: <i>W.M. Garrison</i>	DATE: 8-29-62	CODE IDENT NO. 77820
	9-3239				SIZE C
	9-2811				10-260150
SCALE NONE		WT SEE PARTS LIST	REF 10-350349	SHEET	

10-260150

TAB.

Mouser Electronics

Authorized Distributor

Click to View Pricing, Inventory, Delivery & Lifecycle Information:

[Amphenol:](#)

[10-260150-323](#)