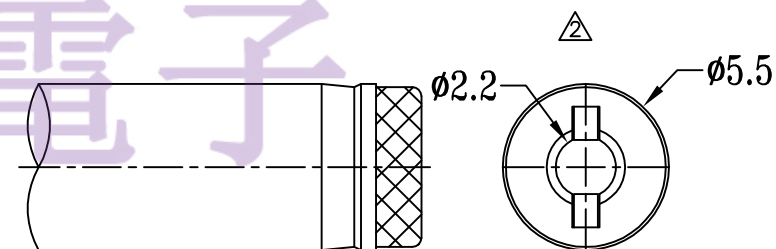
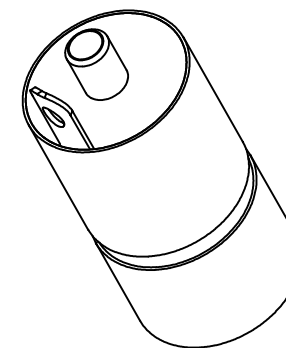
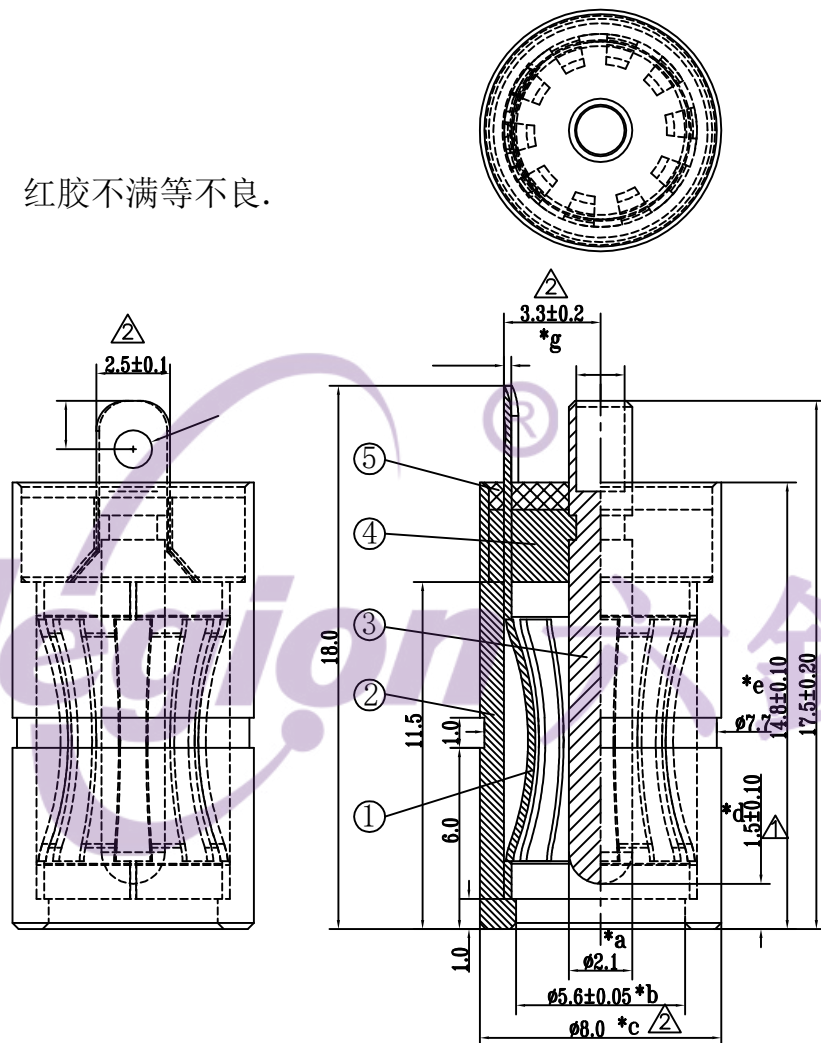
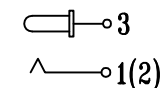


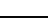



- 1: 产品插拔力10-20N.
- 2: 盐雾测试48H.
- 3: 接触电阻<70毫欧.
- 4: "＊"重点尺寸.
- 5: 产品外观无电镀脱皮，红胶不满等不良.



DC MATE PLUG

A3	2022.04.06	 修正尺寸公差, 新增匹配插头	GYW	
A2	2017.04.11	 重点尺寸1.7改为1.5	GYW	
A1	2017.03.16	增加产品技术要求	GYW	
A0	2017.03.03	首次发行	GYW	
NO	DATE	REVISIONS	BY	APPD
UNIT : MM		ROHS	DWN	
SCALE: 4:1		COMPLIANT	CHK'D	
		APPD		
电子五金有限公司			PRO.AGL:  	REV : A2