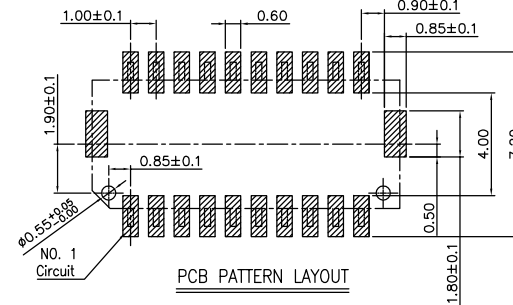
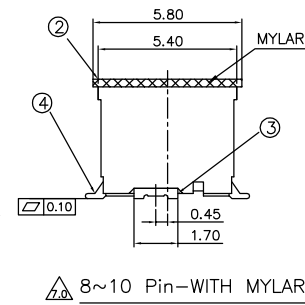
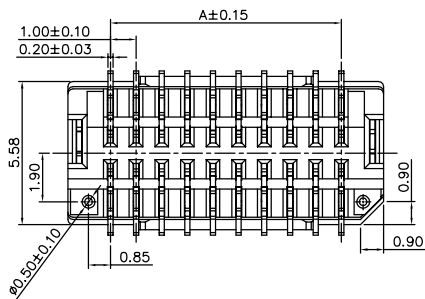
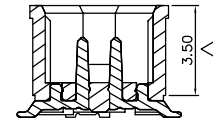
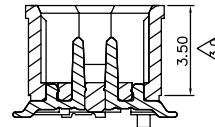
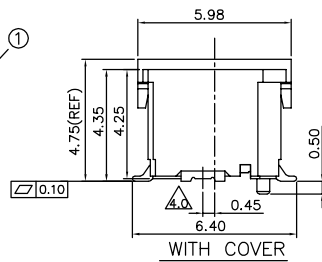
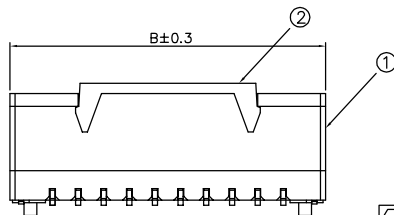
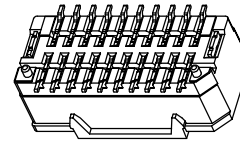
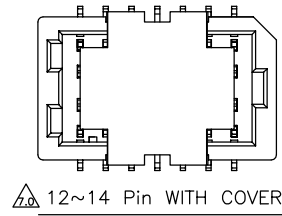
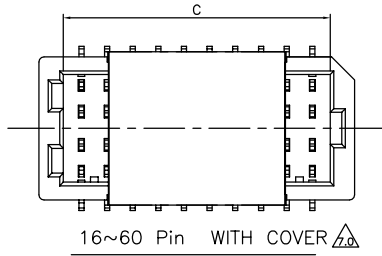


RoHS+REACH

NO.	COMPONENTS	MATERIALS	SPECIFICATION:FINISH/COLOR	QTY.
1	HOUSING	HIGH TEMPERATURA MATERIAL UL94V-0	NATURAL	1
2	CAP OR MYLAR	HIGH TEMPERATURA MATERIAL/MYLAR	WHITE/PALE YELLOW	1
3	STATOR	BRASS	SURFACE PLATING: TIN PLATING	2
4	TERMINAL	COPPER ALLOY	TIN PLATING OR GOLD PLATED	N

NOTE(UNLESS OTHERWISE SPECIFIED):
 1. ALL MATERIAL MUST BE COMPLY WITH ROHS+REACH.
 2. PRODUCT PERFORMANCE:
 2.1 RATED VOLTAGE(MAX.):50V AC/DC
 2.2. RATED CURRENT(MAX.):1.0A AC/DC
 2.3 DIELECTRIC STRENGTH:500V AC/MINUTE
 2.4 INSULATION RESISTANCE:100 MΩ MIN.
 2.5 CONTACT RESISTANCE:20 mΩ MAX.
 2.6 OPERATING TEMPERATURE:-25°C to +85°C
 3.PART NO. LEGEND:

1WF02- 314 0XX-XXXXX
 WATER CODE
 012:12PIN



DIMENSION LIST:

CKT	A	B	C
08	3.0	6.3	4.4
10	4.0	7.3	5.4
12	5.0	8.3	6.4
14	6.0	9.3	7.4
16	7.0	10.3	8.4
18	8.0	11.3	9.4
20	9.0	12.3	10.4
22	10.0	13.3	11.4
24	11.0	14.3	12.4
26	12.0	15.3	13.4
30	14.0	17.3	15.4
34	16.0	19.3	17.4
40	19.0	22.3	20.4
50	24.0	27.3	25.4
60	29.0	32.3	30.4

PIN	WATER CODE	SPECIFICATION VS DESCRIPTION
08	00001	TIN PLATING/WITH PLOES
	00002	GOLD PLATED/WITHOUT PLOES
10	00002	GOLD PLATED/WITH PLOES
	00003	GOLD PLATED/WITHOUT PLOES
12	00004	TIN PLATING/WITH PLOES
	00002	GOLD PLATED/WITH PLOES
14	00007	GOLD PLATED/WITHOUT PLOES
	00001	GOLD PLATED/WITH PLOES
16	00003	TIN PLATING/WITH PLOES
	00004	TIN PLATING/WITH PLOES
18	00001	TIN PLATING/WITH PLOES
	00003	TIN PLATING/WITH PLOES
20	00005	TIN PLATING/WITHOUT PLOES
	00001	TIN PLATING/WITH PLOES
22	00001	TIN PLATING/WITH PLOES
	00003	TIN PLATING/WITH PLOES
24	00003	TIN PLATING/WITH PLOES
	00004	GOLD PLATED/WITH PLOES
26	00004	GOLD PLATED/WITHOUT PLOES
30		
34		
40		
50		
60		

REV.	DATE	DESCRIPTION	DRAWING
9.0	22.10.11	Add the specification description of corresponding material number	TGC
8.0	21.12.29	Change the new material number	TGC
7.0	21.06.15	Modified 12Pin&14Pin mylar patch to mount adsorption cover	LWJ
6.0	17.09.19	Added 22Pin and 26Pin specifications	Henry
5.0	17.05.22	Added 8Pin specifications	Henry
4.0	14.08.06	Fixed plate structure modification	Xiaoyong
3.0	14.04.28	Add plastic to the bottom for strength	Jon
2.0	14.02.12	The plastic wall is thickened to increase strength	Chenkun

DRAWING: LWJ	GENERAL TOLERANCE	
	.X: = ±0.30	.X*: = ±2°
CHECKED:	.XX: = ±0.20	.XX*: = ±1°
	.XXX: = ±0.10	.XXX*: = ±0.5°
APPROVAL:	UNIT: MM	PROJECTION:
	SCALE: 1/1	
	SHEET: 1/1	

CHIN-BAN
Electronic Technology

DESCRIPTION: 1.0mm pitch vertical dual row wafer	
PART NO: 1WF02-3140XX-XXXXX	REV: 9.0
DRAWING NO: UK0075	SIZE: A4