

DESCRIPTION: 979 SERIES D-SUB BACKSHELL - DIE CAST

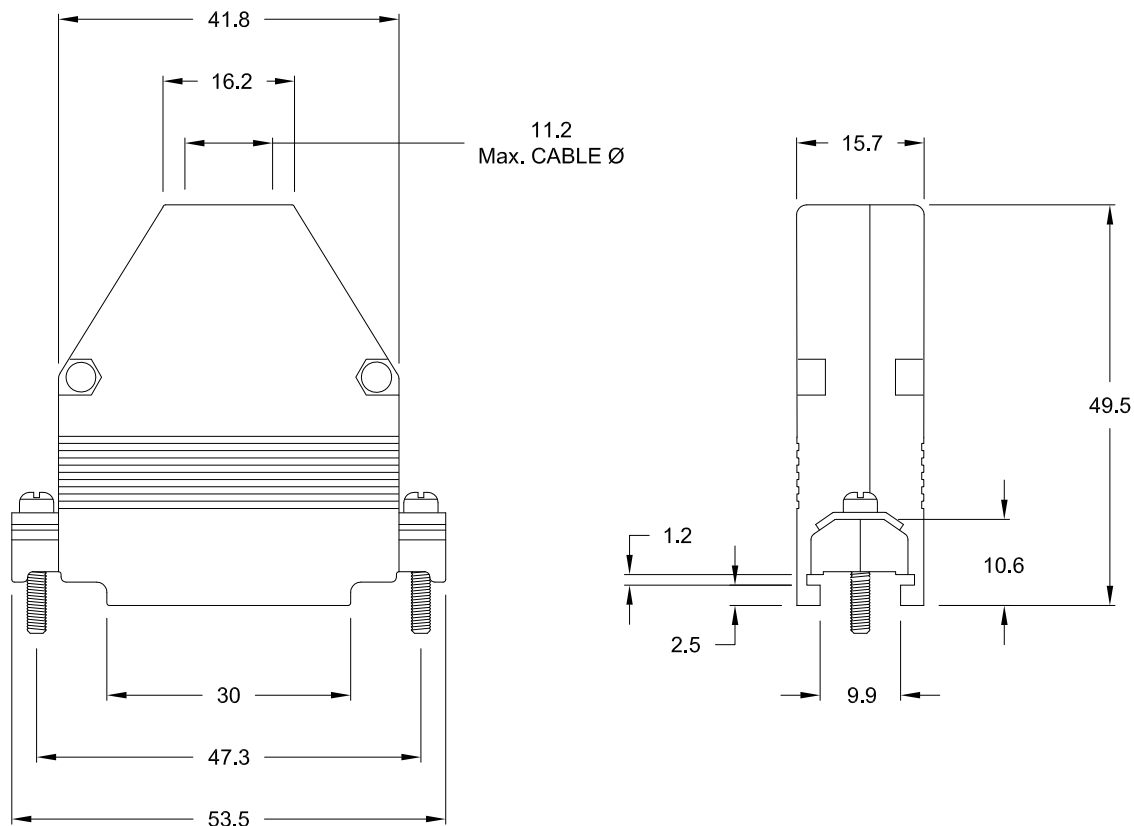
ALL TOLERANCES = ± 0.3
UNLESS OTHERWISE INDICATED

DESIGNED TO ACCOMMODATE STANDARD:
D-SUB - Shell Size 3

BACKSHELL KIT INCLUDES:

- 2 - BACKSHELL HALVES
- 2 - 4-40 MATING SCREWS
- 2 - SADDLE WASHERS
- 2 - HOUSING SCREWS
- 2 - HOUSING NUTS
- 1 - GROMMET TREE - VARIOUS SIZES
(NON-CONDUCTIVE GROMMETS)

MATERIAL: DIE-CAST ZINC ALLOY
PLATING: NICKEL
OPERATING
TEMPERATURE: -45°C TO +120°C



979-025-030 R 12 1

SERIES _____
POSITIONS _____
025 _____

MATERIAL _____
030 = ZINC
RoHS COMPLIANT _____
R = HIGH TEMP. PROCESS

PLATING _____
12 = NICKEL

PUT-UPS _____
1 = KIT

UNITS = mm

DO NOT SCALE FROM DRAWING

RoHS COMPLIANT



THESE DRAWINGS AND SPECIFICATIONS ARE
THE PROPERTY OF NorComp AND SHALL NOT
BE REPRODUCED, COPIED OR USED AS THE
BASIS FOR THE MANUFACTURE OF SALE OF
APPARATUS WITHOUT WRITTEN PERMISSION.

NorComp

DRAWN:

C. SMITH

DATE:

04-20-10

SCALE:

NTS

SHEET

OF

1

2

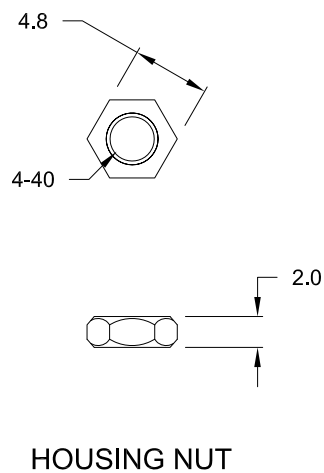
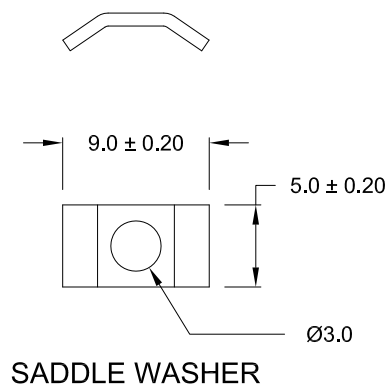
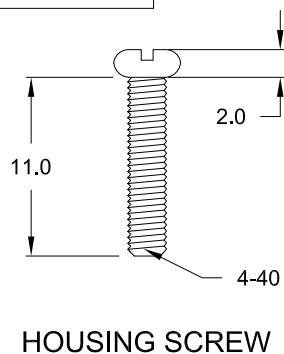
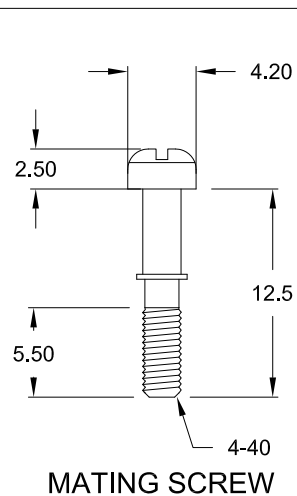
REV

5

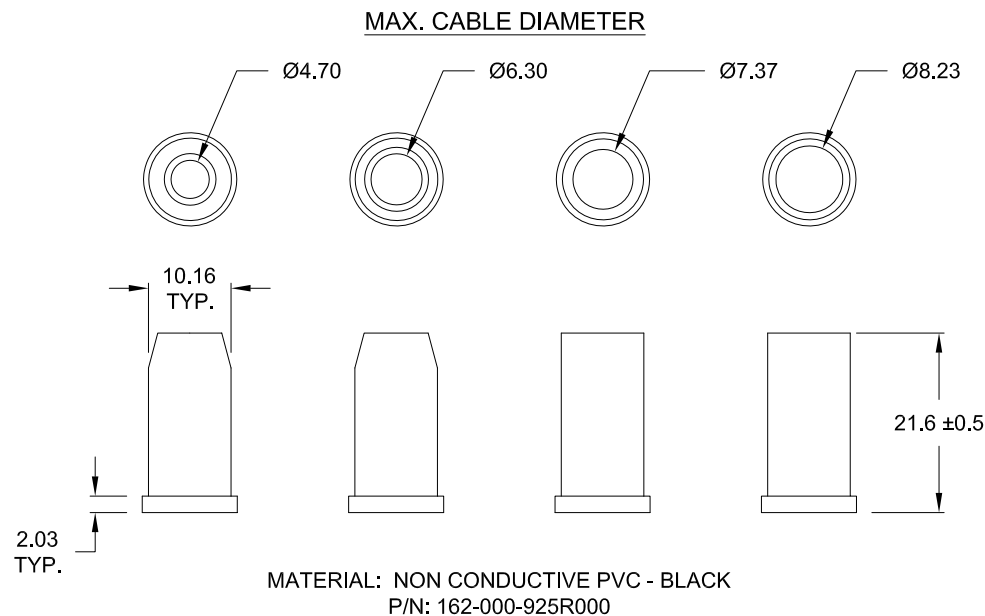
DWG NO.

979-025-030R121

DESCRIPTION: 979 SERIES D-SUB BACKSHELL - HARDWARE



ALL HARDWARE:
MATERIAL = STEEL
PLATING = NICKEL



UNITS = mm

DO NOT SCALE FROM DRAWING

RoHS COMPLIANT



THESE DRAWINGS AND SPECIFICATIONS ARE THE PROPERTY OF NorComp AND SHALL NOT BE REPRODUCED, COPIED OR USED AS THE BASIS FOR THE MANUFACTURE OF SALE OF APPARATUS WITHOUT WRITTEN PERMISSION.

DRAWN:

C. SMITH

DATE:

04-20-10

NorComp

SCALE:

NTS

SHEET

OF

2

2

REV

5

DWG NO.

979-025-030R121

Mouser Electronics

Authorized Distributor

Click to View Pricing, Inventory, Delivery & Lifecycle Information:

NorComp:

979-025-030R121